

## > Contents

Welcome	2
How to charge SCRIPT	4
Setting up SCRIPT for the first time	5
Connecting Conversor HD	7
Connecting a Director HD microphone	8
SCRIPT and Conversor HD in everyday use	9
Troubleshooting	10
Manufacturer's Warranty	11

## > Welcome

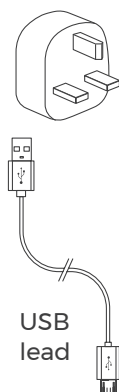
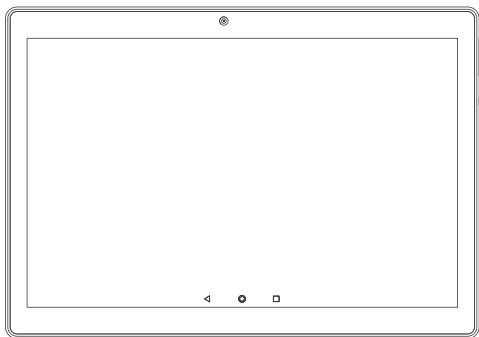
**Thank you for your purchase of SCRIPT**, a real-time TEXT display – like subtitles for everyday conversations.

---

### **SCRIPT includes the following:**

- + Android device (5" mobile phone or 10" tablet)
- + UK Mains charger, with USB socket
- + 3m USB charging lead
- + Desktop stand

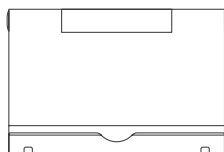
10" tablet



5" mobile phone



Desktop stand



Used on its own, hand-held or on the desktop stand, the tablet and mobile phone device will display real-time text from the conversations held nearby.

Used in conjunction with a Conversor HD or Conversor Pro remote microphone and receiver, this display will provide real-time text corresponding to the speech in the vicinity of the Conversor microphone.

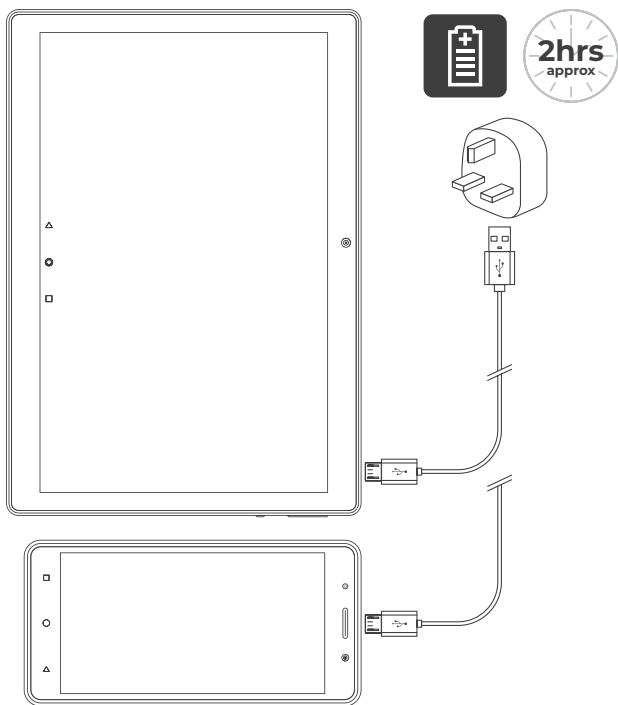
In order to access the Google server, which transcribes the speech, the unit must be connected to WiFi internet.

When not in use for its normal SCRIPT function, the tablet and mobile phone device may be used for all other normal mobile device functions including email, web browsing etc.

## > How to charge SCRIPT

SCRIPT will charge in approximately 2 hours, using the supplied charger. Please connect the USB charger lead between the supplied charger and the USB socket on the device.

The battery gauge will be visible as a small icon on the top right corner of the display.



## > **Setting up SCRIPT for the first time**

### **1. Unpack the device from its box**

Locate and connect the charger, and allow a full charge. Some devices will arrive already charged, others will need several hours charge before first use. The display will notify you the charge status, when you connect the charger.


### **2. Switch ON**

There are TWO button controls on the edge of the device, one long button (volume) and one short button (power).

Press and hold the power button until the display lights up, then wait while the Android system starts.


SWIPE your finger up across the centre display, from the edge. This will “unlock” it. You won’t usually have to do this if you keep the unit from running out of charge.

### **3. Connect WiFi Internet**

SWIPE up from the bottom of the screen again, and press the SETTINGS icon 


Choose Network & Internet 

Select your local WiFi network from the list and enter your access key.

Return to the home screen by touching the centre dot at the bottom of the screen. 

## > **Setting up SCRIPT for the first time**

### **4. Live Transcribe**

Touch the  icon, at the bottom right corner of the screen, to start the live TEXT display. The Live Transcribe program will start immediately.

SCRIPT can decipher speech up to 3m away, if the speech is loud and clear. If the speech is quiet or if there is some background noise, the SCRIPT unit will need to be closer to the speaking person.

You may find that the SCRIPT unit alone meets your needs, and it can even decipher the TV sound, if you have the TV quite loud.

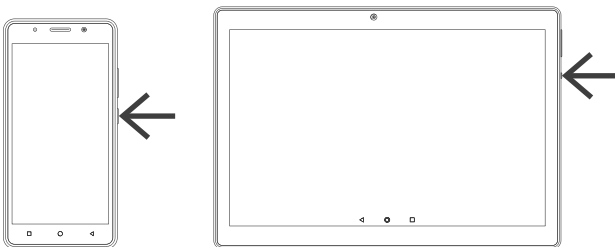
For quieter voices, or those further away, you can connect a Conversor HD remote microphone.

To EXIT the Live Transcribe program, touch the 'X' in the top left corner. You may then use the computer for other functions like browsing the internet, email etc.

### **5. Switch OFF**

Use the little power button on the top right corner of the display, to switch SCRIPT into standby mode.

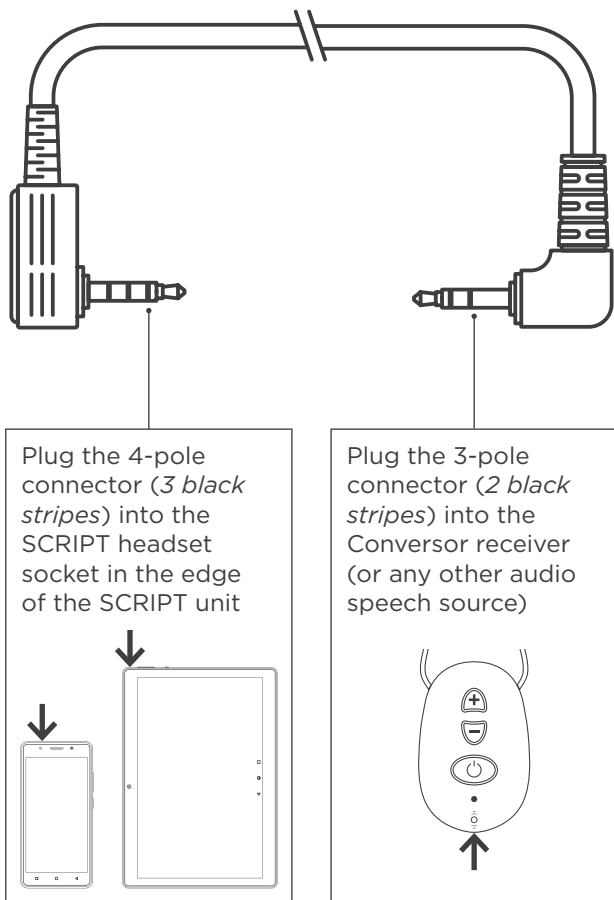
A short press will switch it ON again later.



## 6. Connecting Conversor HD

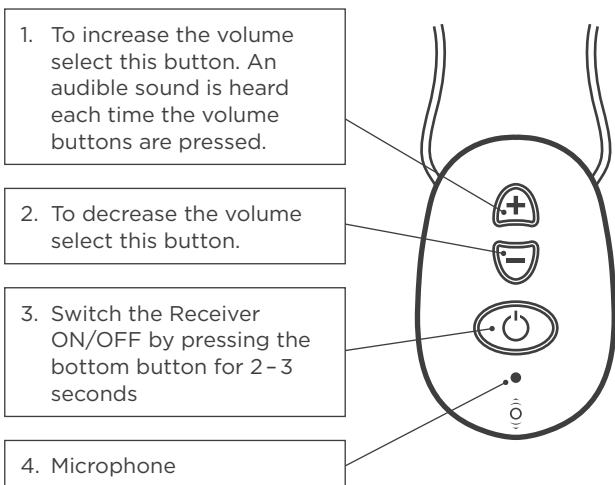
A short SCRIPT adapter lead will allow connection from a Conversor HD receiver into the SCRIPT display unit.

Please notice that the 2 ends are different.



## > Setting up SCRIPT for the first time

### 7. Setting up the Receiver



The best setting for text recovery is 50% or more.

Press and hold the + button for a while to get up to 100% then press the - button 2 or 3 times for an ideal setting. Most settings will give optimum results.

Check that the light is GREEN, indicating that the Conversor is working properly and receiving its microphone's signal.

### 8. Connecting a Director HD microphone

Simply plug the Director HD microphone into the SCRIPT headset socket. Turn SCRIPT OFF and ON again, to make it recognize the connection. A 'beep' tone can be heard.

### 9. Listening as well as TEXT

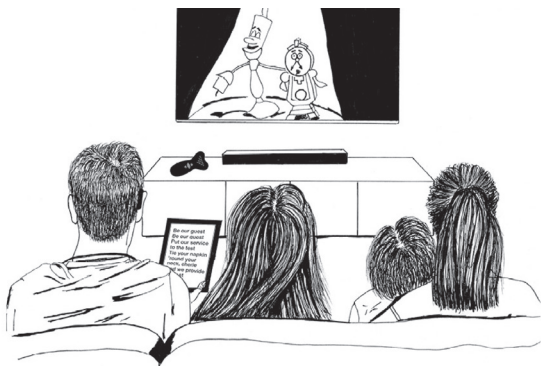
When you plug in the SCRIPT, the neck loop is disconnected, so you will need a second Receiver if you want to listen to the same HD Microphone sound as the text displays.

A second microphone can be purchased from <https://www.conversorproducts.com/shop/conversor-pro-receiver/>



## > SCRIPT and Conversor HD in everyday use

Watch the film, hear the film, read the film.



Learning made easier with subtitles.



## > Troubleshooting

### **Conversation paused, no network connection**

Check the WiFi and Internet settings. Perhaps you have not connected to a WiFi network yet, or the signal isn't strong. Otherwise, please check the internet connection by testing another device on the WiFi.

### **HD Microphone won't connect**

Turn the SCRIPT OFF (with the power button) and ON again, AFTER plugging IN the SCRIPT Accessory lead. This will force the display to notice the presence of the plug.

If you have changed any of the settings in the Live Transcribe program, you might also need to re-select the EXTERNAL microphone option in the Audio menu. This setting is saved, so you won't have to set it every time you plug-in.

## > **Manufacturer's Warranty**

The manufacturer, Conversor Limited, issues a two-year limited warranty to the original consumer of this product. This warranty will go into effect upon the date of original purchase of this equipment, and shall remain in effect for two calendar years from that date. The batteries, Microphone wrist strap and Receiver neck loop are restricted to a one-year limited warranty.

### **What is covered by this warranty?**

Any electronic component which, because of workmanship, manufacturing, or design defects, fails to function properly under normal use during the life of this warranty will be replaced or repaired at no charge for parts or labour when returned to the point of purchase. Transportation costs shall be paid by the customer. If it is determined that repair is not feasible, the entire unit may be replaced with an equivalent unit upon mutual agreement of the Dealer and the customer.

### **What is not covered by this warranty?**

This two-year limited warranty does not apply to:

- + Malfunctions resulting from abuse, neglect, or accident.
- + Peripheral accessories as itemised within the product brochure, when such items are returned after 90 days from the original purchase.
- + Batteries, Microphone, wrist strap and Receiver neck loop, which are covered by a one-year warranty.
- + Instruments installed, connected, used, or adjusted in a manner contrary to the instructions provided.
- + Consequential damages and damages resulting from delay or loss of this unit. The exclusive remedy under this warranty is strictly limited to repair or replacement as herein provided.
- + Products damaged in transit unless investigated by the shipper and returned to the warrantor with the investigation report.

The manufacturer reserves the right to make changes in the design or construction of any of its products at any time without incurring any obligation to make any changes whatsoever on units previously purchased.

This warranty is in lieu of all other expressed warranties by the manufacturer. No representative or person is authorised to represent or assume for the manufacturer any liability in connection with the sales or use of this products other than as set forth above.

If your unit requires service under the terms of this warranty, carefully package the complete product to prevent damage in transit and return it to the point of purchase. Include a detailed description of the problem, your full name, billing and shipping address, and telephone number.

The above warranty does not affect any legal rights that you might have under applicable national legislation governing the sale of consumer goods. Your point of purchase may have issued a warranty that goes beyond the clauses of this limited warranty. Please consult your point of purchase for further information.